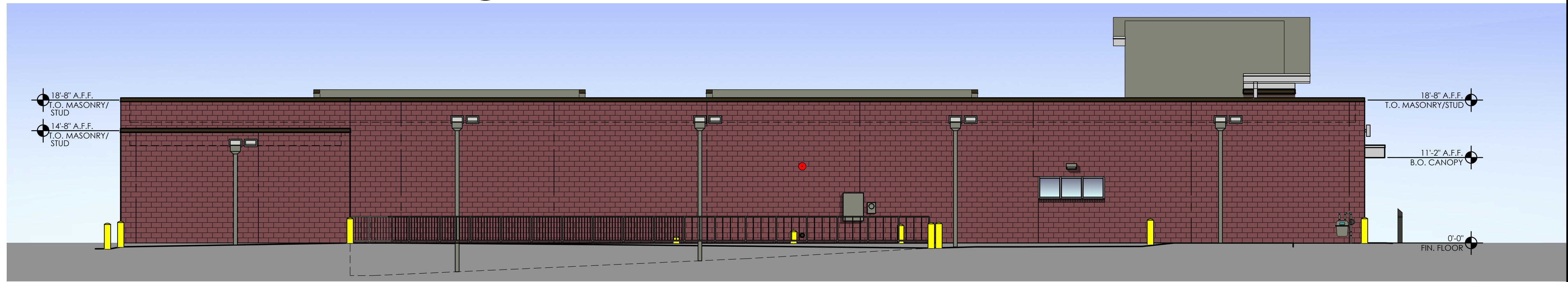


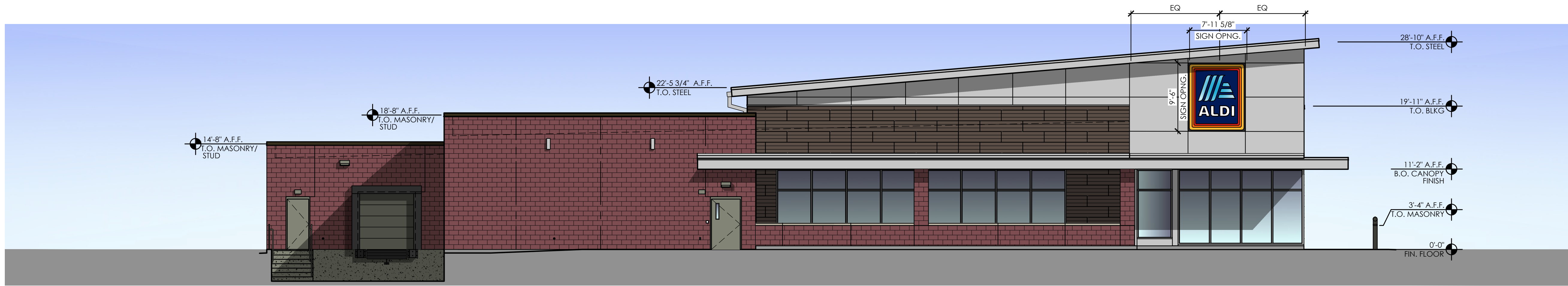
SIGNAGE			
DESCRIPTION	QUANTITY	SQ. FT. PER SIGN	TOTALS
TOWER SIGN	2	74.9	149.8
TOTAL SIGNAGE			149.8
SIGNAGE IS SHOWN FOR REFERENCE ONLY AND SHALL BE UNDER SEPARATE PERMIT SUBMITTAL			



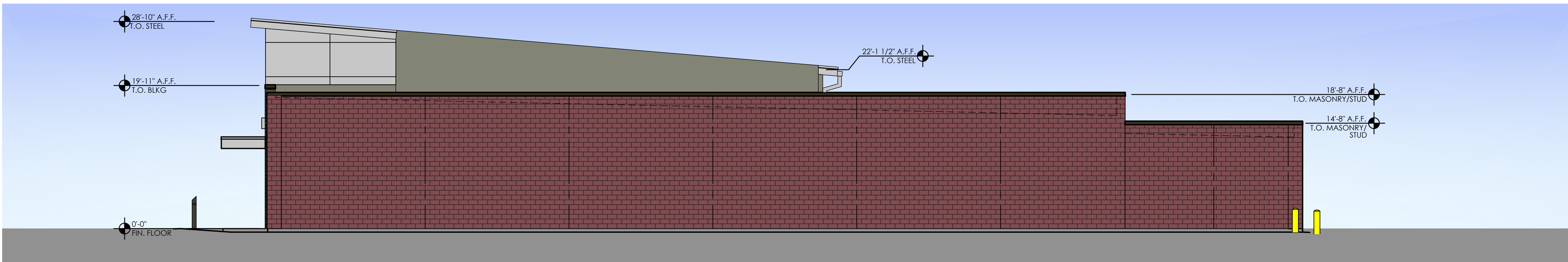
4 Front Elevation  
SCALE: 1/8" = 1'-0"



3 Rear Elevation  
SCALE: 1/8" = 1'-0"



2 Side Elevation  
SCALE: 1/8" = 1'-0"



1 Side Elevation  
SCALE: 1/8" = 1'-0"

