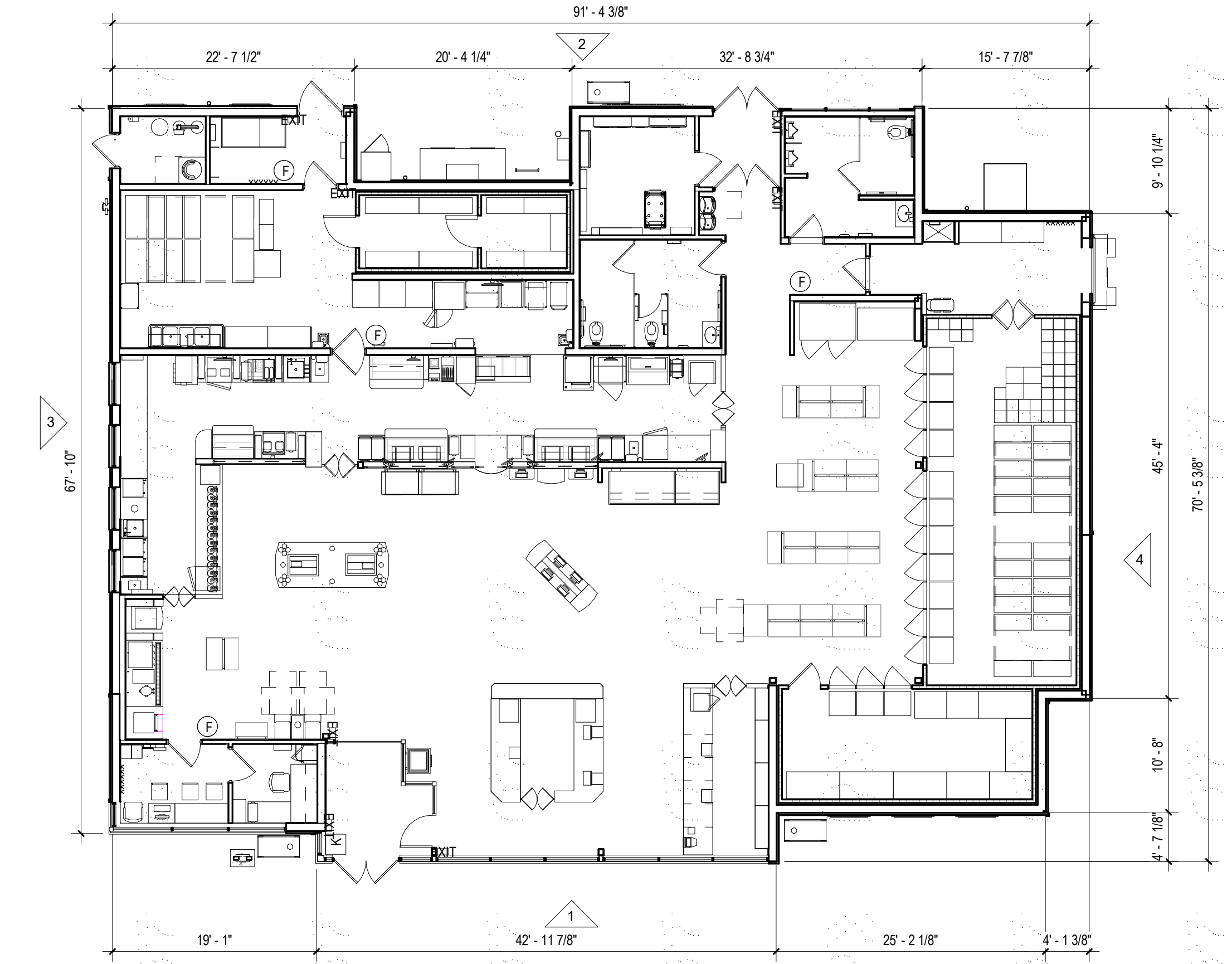




**1 FRONT ELEVATION**  
3/16" = 1'-0"

<b>GLAZING CALCS - FRONT ELEVATION:</b> CLEAR GLAZING - 462 SQFT SPANDREL GLASS - 77 SQFT TOTAL - 541 SQFT  TOTAL BUILDING - 1,753 SQFT GLAZING - 541/1,753 = 31%	<b>MATERIAL CALCS - FRONT ELEVATION:</b> BRICK - 301 SQFT COMPOSITE - 383 SQFT STUCCO/EIFS - 446 SQFT TILE - 82 SQFT TOTAL - 1,212 SQFT
---	--



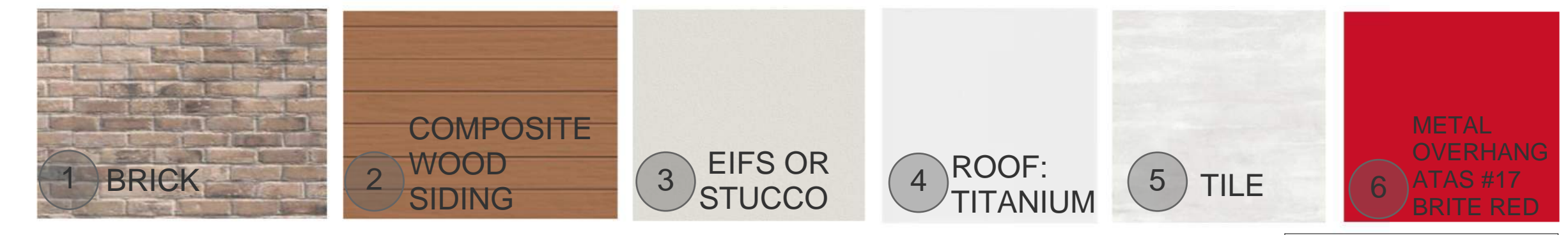
**5 FLOOR PLAN**  
1" = 10'-0"



**2 REAR ELEVATION**  
3/16" = 1'-0"

<b>GLAZING CALCS - REAR ELEVATION:</b> CLEAR GLAZING - 68 SQFT SPANDREL GLASS - 136 SQFT TOTAL - 204 SQFT  TOTAL BUILDING - 1,712 SQFT GLAZING - 204/1,712 = 30%	<b>MATERIAL CALCS - REAR ELEVATION:</b> BRICK - 576 SQFT COMPOSITE - 543 SQFT STUCCO/EIFS - 320 SQFT TILE - 69 SQFT - 5% TOTAL - 1,508 SQFT
--	--

**MATERIALS:**

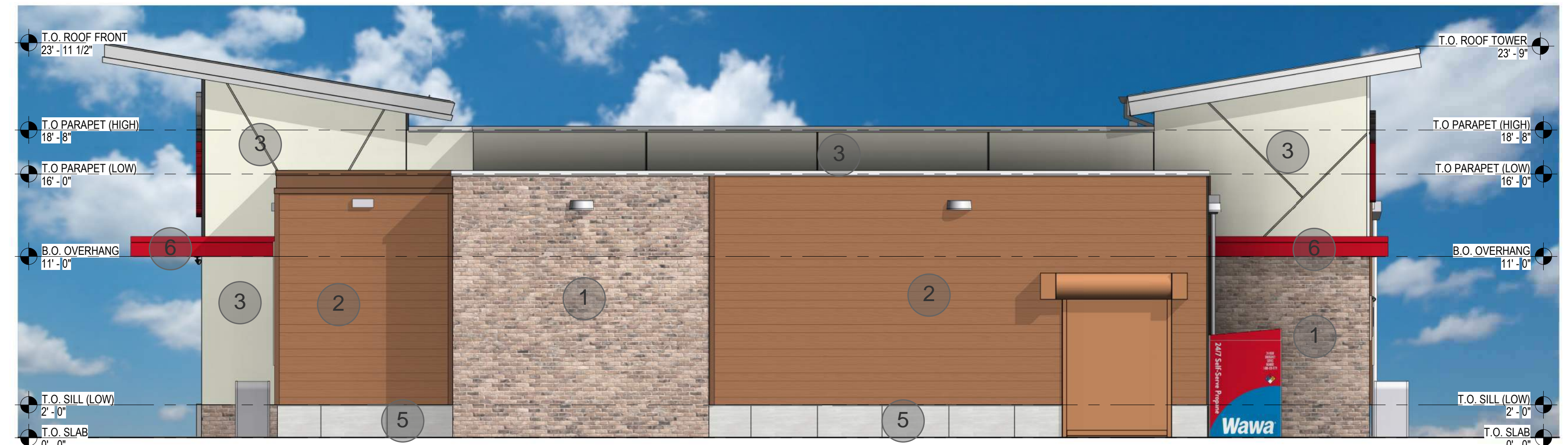


EXTERIOR FINISH PACKAGE: BRICK-1



**3 SIDE ELEVATION**  
3/16" = 1'-0"

<b>GLAZING CALCS - SIDE ELEVATION:</b> CLEAR GLAZING - 110 SQFT SPANDREL GLASS - 46 SQFT TOTAL - 156 SQFT  TOTAL BUILDING - 1,337 SQFT GLAZING - 300/1,337 = 22%	<b>MATERIAL CALCS - SIDE ELEVATION:</b> BRICK - 806 SQFT COMPOSITE - 224 SQFT STUCCO/EIFS - 88 SQFT TILE - 63 SQFT TOTAL - 1,181 SQFT
--	--



**4 SIDE ELEVATION**  
3/16" = 1'-0"

<b>MATERIAL CALCS - SIDE ELEVATION:</b> BRICK - 363 SQFT COMPOSITE - 552 SQFT STUCCO/EIFS - 334 SQFT TILE - 87 SQFT TOTAL - 1,336 SQFT
---