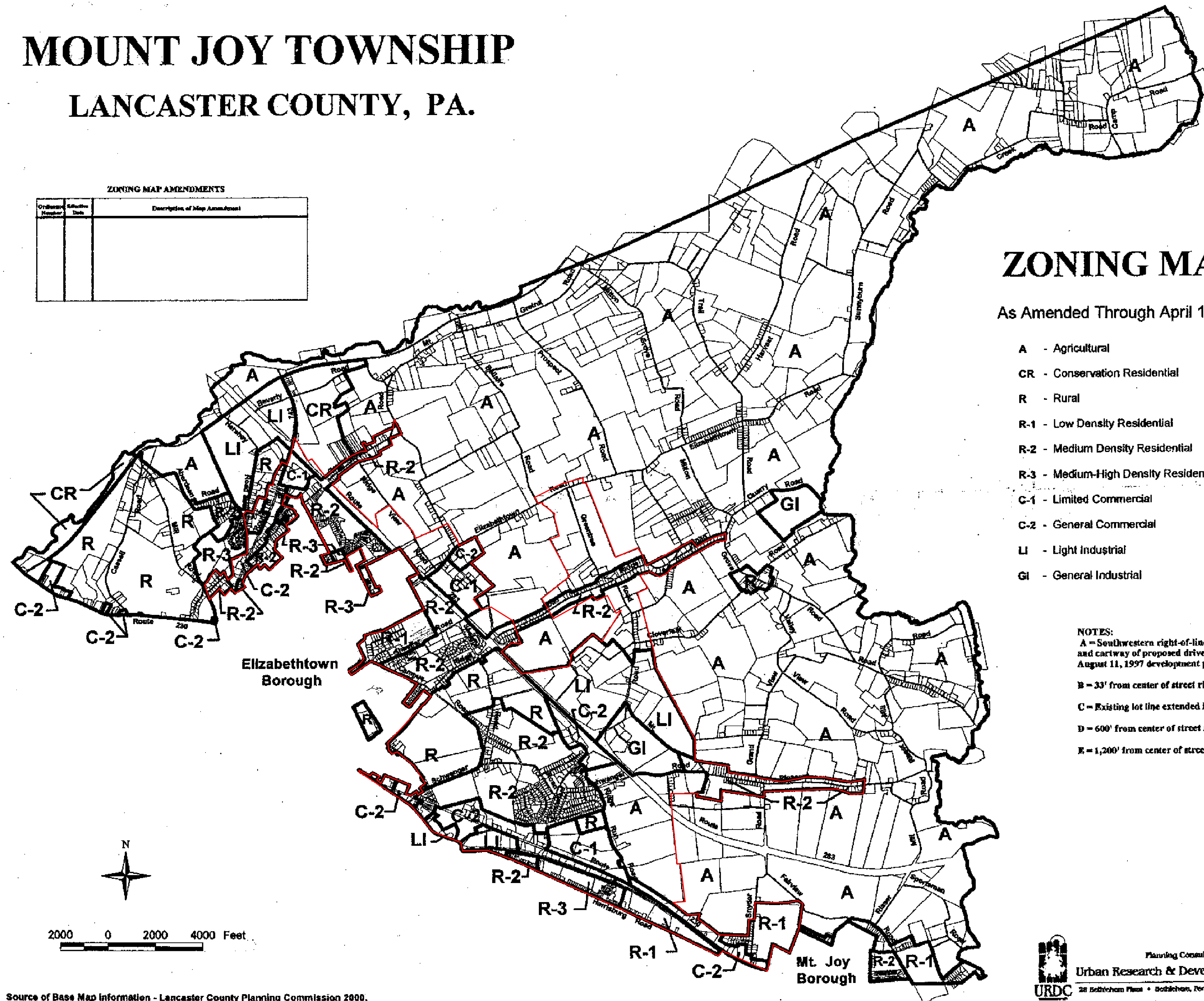


# MOUNT JOY TOWNSHIP LANCASTER COUNTY, PA.

ZONING MAP AMENDMENTS

Ordinance Number	Effective Date	Description of Map Amendment



## ZONING MAP

As Amended Through April 12, 2000

- A - Agricultural
- CR - Conservation Residential
- R - Rural
- R-1 - Low Density Residential
- R-2 - Medium Density Residential
- R-3 - Medium-High Density Residential
- C-1 - Limited Commercial
- C-2 - General Commercial
- LI - Light Industrial
- GI - General Industrial

- NOTES:
- A = Southwestern right-of-line of proposed street and cartway of proposed driveway, as shown on August 11, 1997 development plan.
  - B = 33' from center of street right-of-way.
  - C = Existing lot line extended in a straight line.
  - D = 600' from center of street right-of-way.
  - E = 1,200' from center of street right-of-way.

Source of Base Map Information - Lancaster County Planning Commission 2000.

Planning Consultants  
**Urban Research & Development Corporation**  
 URDC  
 28 Elizabeth Place • Elizabeth, Pennsylvania 19016 • 610-495-4701

**TRAFFIC PLANNING & DESIGN, INC.**  
 SANATOGA COMMONS, 2500 EAST HIGH STREET, SUITE 650  
 POTTSTOWN, PENNSYLVANIA  
 OFFICE (610)326-3100 FAX (610)326-9410  
 E-MAIL TRAFFICEXPERTS@TRAFFICPD.COM

FIGURE 2

TRANSPORTATION SERVICE AREA